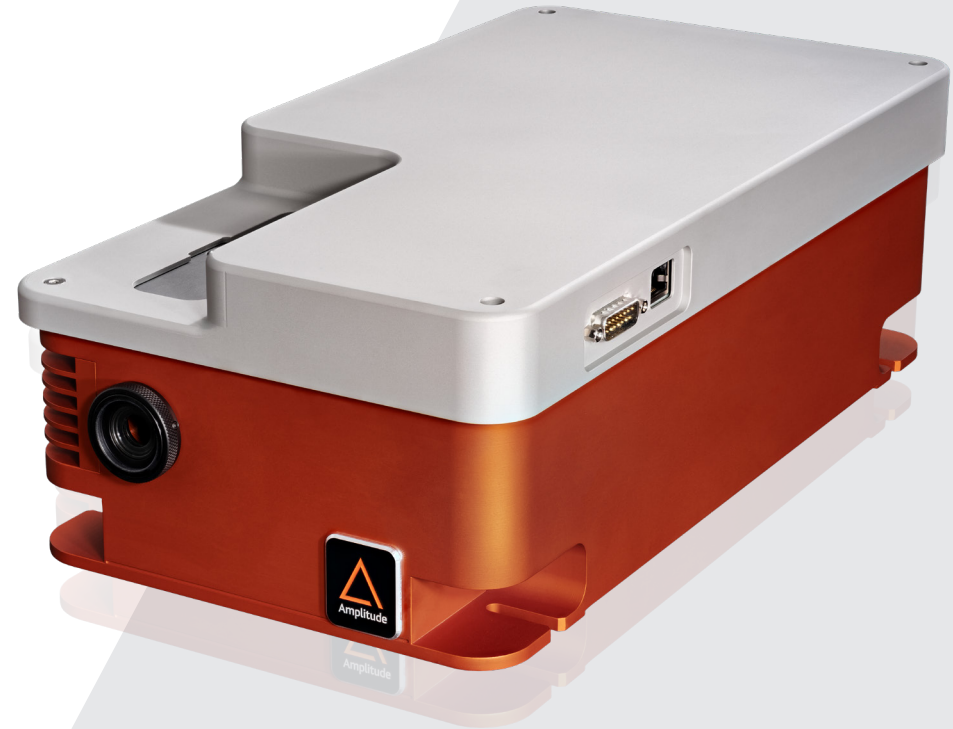


# BEAM

*Laser beam management system*

*Motorized beam expander*

Intended to simplify optical beam delivery in micromachining stations, BEAM module is installed between the laser and the scanning head. It integrates a motorized beam expander, a power meter, and an attenuator in a single box.



## Applications

### Industry:

- > Microelectronics
- > Micromachining

### Medical:

- > Medical Device Manufacturing

## Key Features

- > Beam expander
- > Attenuator
- > Power meter
- > Easy to integrate, control and align

# Specifications

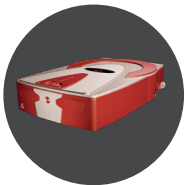
## Beam

Motorized Shutter	Closed safety position
Beam Expander	Fixed or motorized from x1 to x5
Polarization Converter	Circular or linear polarization fixed or motorized
Motorized Attenuator	From 2% to 98%
Power Sampling	Power diagnosis during the process
Power Measurement	From 0 to 100 W

## Utilities

Dimensions	39,7 x 21 x 13 cm
Weight	9 kg
Interface	Ethernet - GigE RJ45
Power Supply	24 V - 2A

# Compatibility



Satsuma



Tangor

